

Menu Defaults

▼ Main Menu

- Administration Menu
- Reporting Menu
- Output Writer
- Excel Chart Creator
- Address Book
- Search and Filter Facility

▼ Structures Menu

- General Structure Details
- Superstructure Details
- Substructure Details
- Services
- Restriction Details
- Drawings, Files and Images

▼ Elements Menu

- Bearings
- Parapets
- Safety Barriers
- Joints
- Painting

▼ Inspections

- General Details
- Individual Inspection Details
- Inspection Scheduling
- Underwater Inspections
- Health & Safety

▼ Maintenance

- Routine Maintenance
- Update Current Condition for Maintenance Works
- Post Selby Forms
- Inspection History

chriansolutions

33 Oxford Road | Wokingham | Berkshire | RG41 2YE

Mobile: 07766 732055

Office: 01189 629017

Email: chris.evans@chrian-solutions.co.uk

Websites: www.bridgebase.co.uk www.chrian-solutions.co.uk



bridgebase

Why develop bridgebase now?

The government is committed to invest heavily for the forthcoming years in the maintenance of the UK structures stock. To enable the effective and balanced share of funding, Bridge Condition Indicators and Bridge Stock Condition Indicators have been introduced. This together with future bridge performance indicators and further initiatives has led to the development of bridgebase.

To manage these additional requirements and drawing on the experiences of older style databases, bridgebase has been designed as a flexible tool for Bridge Managers and Engineers, to report and monitor the condition of their stock.



Fig 1.1 Current condition of span/structure at any chosen date

Commitment

At Chrian Solutions we are committed to the future development of bridgebase. This will include the incorporation of bridge of performance indicators, modifications to Local Government funding processes and annual asset management planning showing, amongst other things, to monitor of shortfalls in funding.

The system has been developed in partnership between a Bridge Maintenance Engineer, who is involved in the management of bridge stocks for several Local Authorities bridge assets and an MS Access developer.



Fig 1.2 Linking of Images

What bridgebase offers

bridgebase provides a user friendly layout, comprehensive database of records and has been designed under the following main headings;

Main Menu

This is the entry into the database and allows searching and filtering of the structure stock, by structure type, name or number. Additional features search as the output and reporting wizards can also be accessed here.

General Structures

General screen showing information for existing structures, entering new structures and key fields for reporting and sorting of owner information. Additional features include links to web based maps, information on superstructures, substructure, restrictions, services, drawings, records and images.

Elements

Separate screens have been provided for bearings; joints; parapets, pre-stressing; safety fences and paints. Each screen shows a comprehensive level of information e.g. priority ranking of parapets and containment level to N or P classifications.

Inspections

Each inspection, either Principal, General, Special or Superficial, can be entered by structure or span and includes all standard reportable fields, including Inspectors and Engineers comments, work required and scheduling by a chosen or default period. Health & safety information can also be stored for long term records of known hazards. Tabulated information for Underwater inspections has also been included.

Maintenance

Routine Maintenance is displayed allowing any routine maintenance operation to be instructed and recorded, with Engineers and Contractors comments. Post Selby Assessments information is recorded by structure or corner. The current condition of the structure (for any chosen date) allows the monitoring of elements over a period of time, or historical results shown on a single form. This also allows the inputting of incidents, accidents, vandalism or works that have been carried out affecting the condition of the bridge.

Reporting

bridgebase provides reporting of Bridge Condition Indices (BCI) and Bridge Stock Condition Indices (BCSI) by structure class, owner, maintaining authority or road. This can be downloaded to the 'Atkins spreadsheet', reported on using in-built reports or downloaded to other Microsoft applications. Other in-built reports include essential information on bridge elements, current restrictions, owner, location, measurements, span references, construction and element information.

Access to Drop Down Menus

Where necessary, free access to tables via the use of forms has been allowed to enable new manufacturers, materials, for instance, to be added to the drop menus, ensuring that the database develops to keep up with modern advances in material technology.

Bridgebase also offers the following:

- Maintains a live database of outstanding maintenance works.
- Reporting and inputting of bridge inspections in either BE11 or BCI formats.
- Provides graphical statistics and reports of the condition of the current bridge stock via easy to use reporting modules.
- Provides due inspections for any given period and type of inspection.
- Bespoke reporting against any data held enabling custom filtering and sorting on given criteria.
- Functionality of reporting for the upload and retrieval of any information or combination thereof, contained within the database.
- Single point of storage, linking of photos, documents and drawings to particular structures.
- Administration Menu to set user's rights.
- Migration from existing Bridge Management Systems
- Easy to use for the less computer literate.

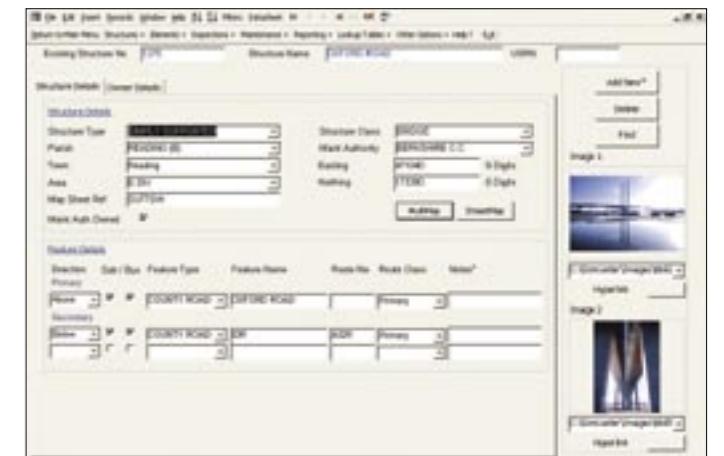


Fig 1.4 A typical screen



No.	Structure Element	Inspected	By	Date	Rating	Comments/Remarks
1	General Inspection	1.0	1.0	1.0	1.0	
2	General Inspection	1.0	1.0	1.0	1.0	
3	General Inspection	1.0	1.0	1.0	1.0	
4	General Inspection	1.0	1.0	1.0	1.0	
5	General Inspection	1.0	1.0	1.0	1.0	
6	General Inspection	1.0	1.0	1.0	1.0	
7	General Inspection	1.0	1.0	1.0	1.0	
8	General Inspection	1.0	1.0	1.0	1.0	
9	General Inspection	1.0	1.0	1.0	1.0	
10	General Inspection	1.0	1.0	1.0	1.0	
11	General Inspection	1.0	1.0	1.0	1.0	
12	General Inspection	1.0	1.0	1.0	1.0	
13	General Inspection	1.0	1.0	1.0	1.0	
14	General Inspection	1.0	1.0	1.0	1.0	
15	General Inspection	1.0	1.0	1.0	1.0	
16	General Inspection	1.0	1.0	1.0	1.0	
17	General Inspection	1.0	1.0	1.0	1.0	
18	General Inspection	1.0	1.0	1.0	1.0	
19	General Inspection	1.0	1.0	1.0	1.0	
20	General Inspection	1.0	1.0	1.0	1.0	
21	General Inspection	1.0	1.0	1.0	1.0	

Fig 1.3 Bridge Inspection Report

What are the alternatives?

There are very few comparable systems on the market that offer similar capabilities to bridgebase. Alternative systems are likely to be considerably more expensive to both purchase and maintain.

Why not develop in-house?

Do you really have the time to develop a truly comprehensive system? The cost of employing a database developer for a thousand or so hours may not be justified against the level of funding for bridge maintenance works. Factoring in Project Management then the benefits of bridgebase become increasingly apparent.

With version updates and bespoke reporting available, then you can have confidence that bridgebase will incorporate the latest County Surveyor's Society recommendations.

Why MS Access?

MS Access is the most widely used relational database in the world. bridgebase is split into a front end and back end, offering you the capability to store the data on a standalone PC, your network using SQL Server or Oracle. MS Access is very inexpensive and most people have some knowledge of using it.

We have developed a very comprehensive system but what if something's missing?

No problem. We offer a bespoke service to our clients, if a specific report is required, we'll write one. If this is to be a widely used report then we ask that the report is made available to our other Clients.

If you have Access developers within your organization, we encourage them to write reports and do small updates so long as we are advised of any changes. By allowing this, bridgebase will further develop in line with local authority's requirements.

How much does it cost?

Chrian Solutions offers a single user license for £4,995 and a multi user license for £5,795. The latter allows any number of concurrent users in the system at the same time.

Support costs are just £32.50 per hour and queries will usually be answered within 24 hours.

Fixed price support can also be arranged.

Any major changes for new government/CSS legislation will incur a fee depending on the size of the update. This should be around £500 per annum per client.

Demo Version

We are so confident in our system that we can provide a one month, fully functional demo version to allow you to experience bridgebase first hand.